

TECHNICAL SPECIFICATIONS

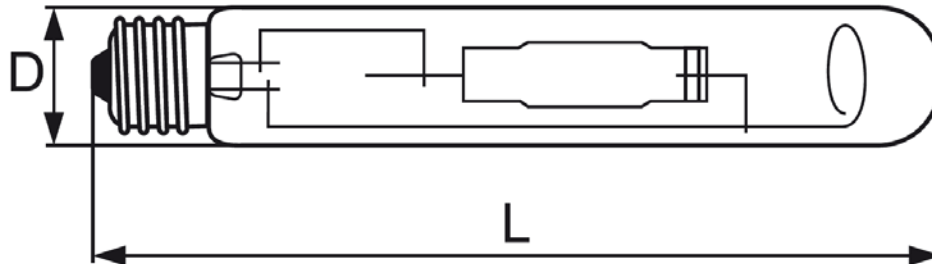
Metal Halide



Technical data

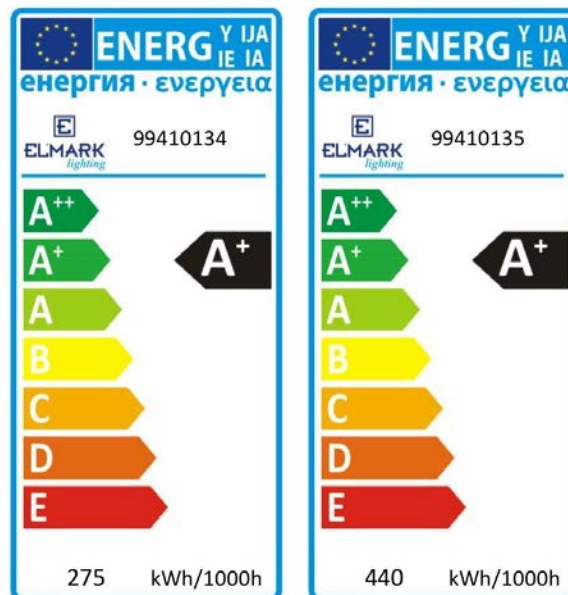
- Power supply: Control g
- Power: 250W; 400W
- Colour: green
 - Rated LLMF at 2,000h:
 - Rated LLMF at 4,000h: 0.
 - Rated LLMF at 8,000h: 0.95
 - Rated LLMF at 16,000h: 0.85
- Base (standard designation): E40
- Average lifetime: 16000h
 - Rated lamp survival factor at 2,000h: 0.99
 - Rated lamp survival factor at 4,000h: 0.98
 - Rated lamp survival factor at 8,000h: 0.95
 - Rated lamp survival factor at 16,000h: 0.80
- Lamp mercury content: max. 30mg
- Dimmable: No

Variants and dimensions



Watt	Colour	Current (A)	Nominal voltage (V)	Ignition Voltage (kV)	Cp μ F	Size (mm)		Catalogue number	Packing (pcs)
						L	D		
250W	green	3.00	100	3.3 ÷ 5	32	210	46	99410134	45
400W	green	4.50	100	3.3 ÷ 5	45	265	46	99410135	35

Energy efficiency



Barcodes

Barcode	Catalogue number
3800131163943	99410134
3800131163950	99410135

Standards

EN 5015

EN 61547

EN 61167

EN 62035

EN 62321

